

# Gecko

## Liquid Transfer Standard Calibration System

### Description

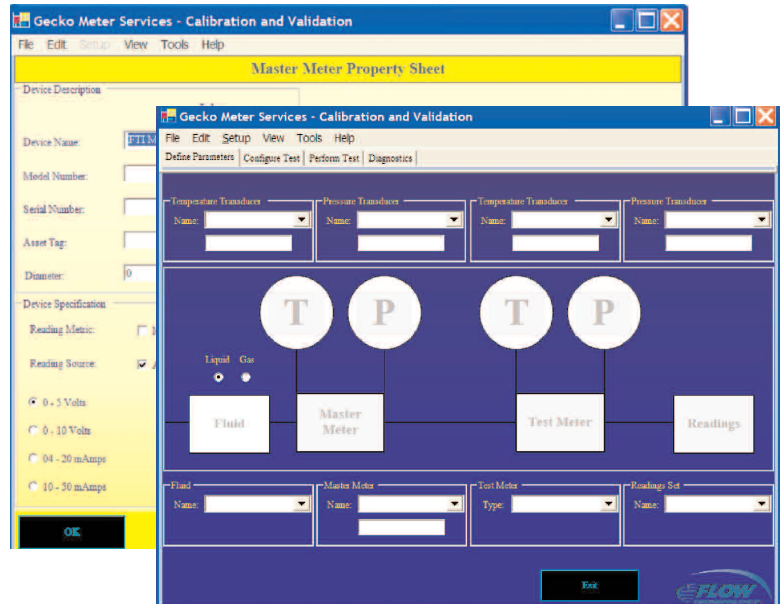
Flow Technology's Gecko transfer standard calibration system provides a cost effective solution for verification and calibration of **liquid** flow meters in the field.

The portable system is truly universal, it can be used to verify or calibrate virtually any flow meter including, but not limited to; Coriolis, Vortex, Electromagnetic, Ultrasonic, Turbine and Positive Displacement flow meters.

The Gecko system consists of 2 major components:

**Gecko EZ-LINK.** A portable interface box that accepts flow, temperature and pressure (analog or frequency) inputs from the transfer standard flow meter (option) and the meter under test. And,

**Gecko EZ-CAL.** A windows based *intuitive* calibration software package that enables the user to setup and run verification and calibration profiles; store and print user defined calibration certificates.



### Gecko EZ-CAL - Windows Based Software

### FEATURES

- Calibration or verification of all types of flow meters, including: Electromagnetic, Coriolis, Positive Displacement, Turbine, Ultrasonic & Vortex
- Portable, robust and economical solution
- Gecko contributes negligible incremental uncertainty to the overall system accuracy
- System accuracy is fundamentally driven by the accuracy of the master meter, temperature and pressure inputs
- USB interface from Gecko EZ-LINK to a standard PC
- Intuitive and easy to use menu driven Gecko EZ-CAL software
- Gecko EZ-CAL presents comprehensive pre-configured reports in tabular or graphical formats
- Gecko EZ-CAL produces user defined calibration certificates
- Data exportable to standard spreadsheet software for custom formats



# Gecko - Transfer Standard Calibration System

## Gecko EZ-LINK

Gecko EZ-LINK effectively handles all the required inputs and outputs of the system:

### Flow Meter Inputs (2 ch)

Frequency 0.5-10K Hz  
(0 - 5 V P-P)

Signal Conditioner 0.5-4K Hz

Analog Voltage 0-5 Volts

Analog Voltage 0-10 Volts

Analog Current 4-20 mA

Analog Current 10-50 mA

### Channel Accuracy

+/- 0.005% of Reading

+/- 0.2 Hz @4K

+/- 0.005 V

+/- 0.005 V

+/-0.02 mA

+/-0.02 mA

### Pressure Input (1ch)

Analog Current(std.) 4-20 mA

Analog Voltage 0-5 Volts

### Channel Accuracy

+/- 0.02 mA

+/- 0.005 V

### Temperature Input (1ch)

3 Wire RTD(std.)

Analog Current 4-20 mA

Analog Voltage 0-5 Volts

### Channel Accuracy

+/- 1°C

+/- 0.02 mA

+/- 0.005 V

### Power

115 VAC or 220 VAC

### Temperature Range

Operating 50 to 104°F (10 to 40°C)

Non-operating 32 to 140°F (0 to 60°C)

### Physical Size

Suitcase:

Width 18.0in. 45.7cm Depth 14.5in. 36.8cm

Height 7.0in. 17.8cm Weight 16.0lbs 7.3kg

### Cables

12' cables are supplied for the master meter, unit under test, temperature and pressure sensors.

Note: Stated accuracy is at calibrated conditions, nominally 22°C (72°F).

## Gecko EZ-CAL

Gecko EZ-CAL software leverages Flow Technology's 45 years of experience in designing primary and secondary calibrators for liquid applications. The windows based software is both intuitive to use and offers flexibility in terms of calibration profiles that can be run. User defined calibration certificates can easily be created.

### System Requirements

Intel Core 2 Duo Processor, 80GB Hard Drive, 1024 MB RAM, one free USB port, Windows XP Professional, Office 2003 or later, and printer (optional for hardcopy report output).

### Calibration & Verification

- Store an infinite number of calibration/verification files
- Create new calibration factors or meter offset factors

### Data Output

- Print pre-defined calibration reports/certificates
- Export data to spreadsheet for customized reports

E Z - L I N K - S - -

Enclosure \_\_\_\_\_

\*S = Suitcase

Temperature Input \_\_\_\_\_

\*R = RTD

4 = 4-20mA

5 = 0-5VDC

Pressure Input \_\_\_\_\_

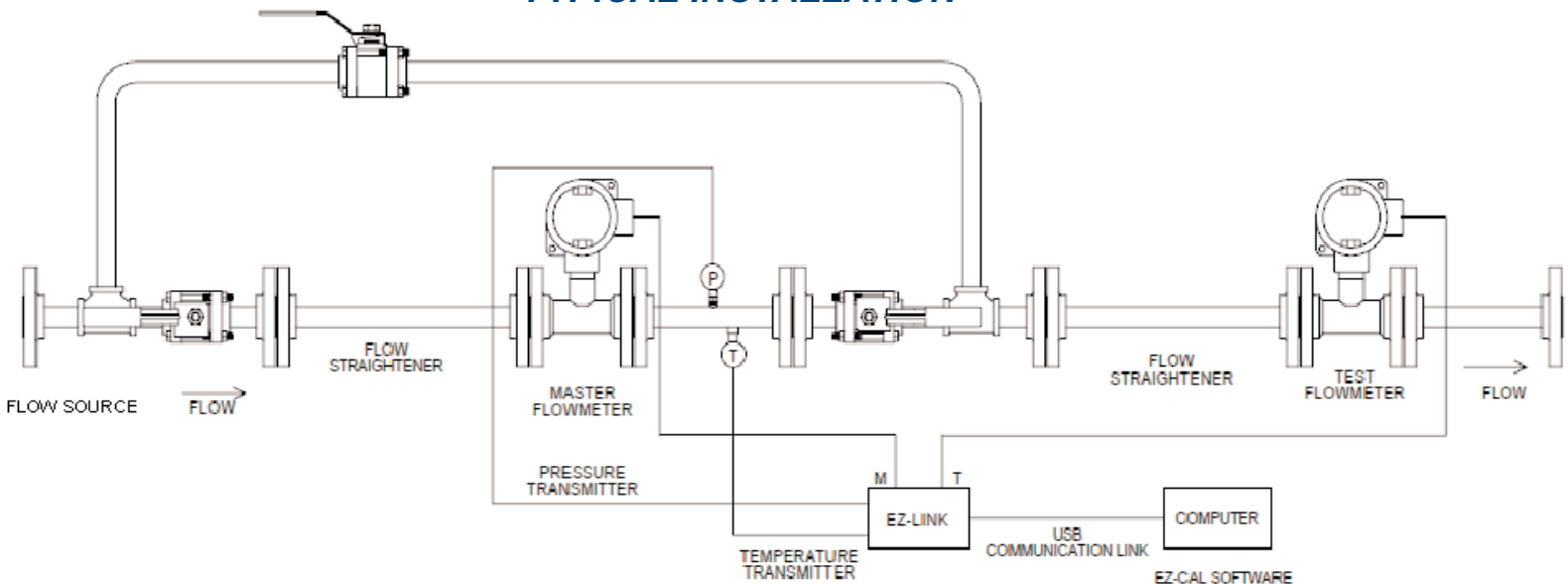
\*4 = 4-20mA

5 = 0-5VDC

\* = Standard

**Equipment Sold Separately:**  
Computer, Master Flow Meters,  
Flow Straightener Sets,  
Temperature/Pressure Sensors

## TYPICAL INSTALLATION



Specifications are for reference only and are subject to change without notice.

8930 S. Beck Avenue, Suite 107, Tempe, Arizona 85284 USA  
Tel: (480) 240-3400 • Fax: (480) 240-3401 • Toll Free: 1-800-528-4225  
E-mail: ftimarket@ftimeters.com • Web: www.ftimeters.com



DB 62069 Rev G © 2009 FTI Flow Technology, Inc. Printed in USA